

TOPCAT® K1

Drw.No.450 K1



Measurement

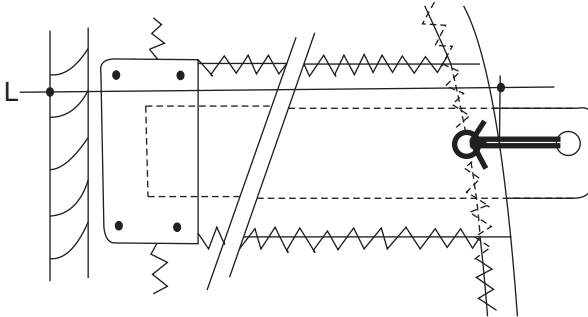
ITCA International Topcat Class Association

Stand:01.01.2013

15,2 sqm

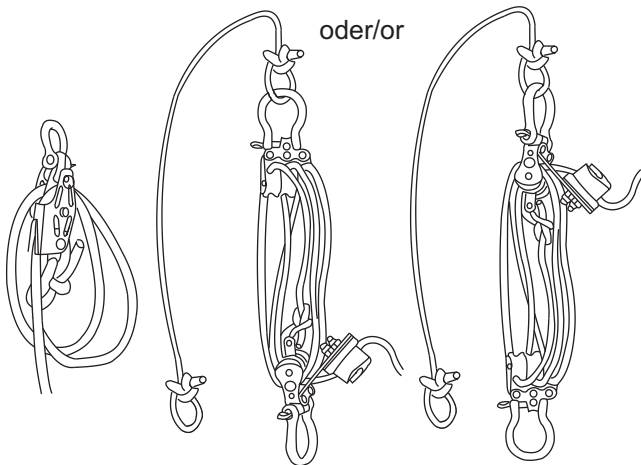
full set of
GFK battens
No. 453 K1 or
foam battens
No. 453 K1F or
compoflex battens
No. 453.1K1F

length of buttonpocket = L



optional: Übersetzung 12:1

oder/or



optional: Luff tensioner No. 480 and 480.1

